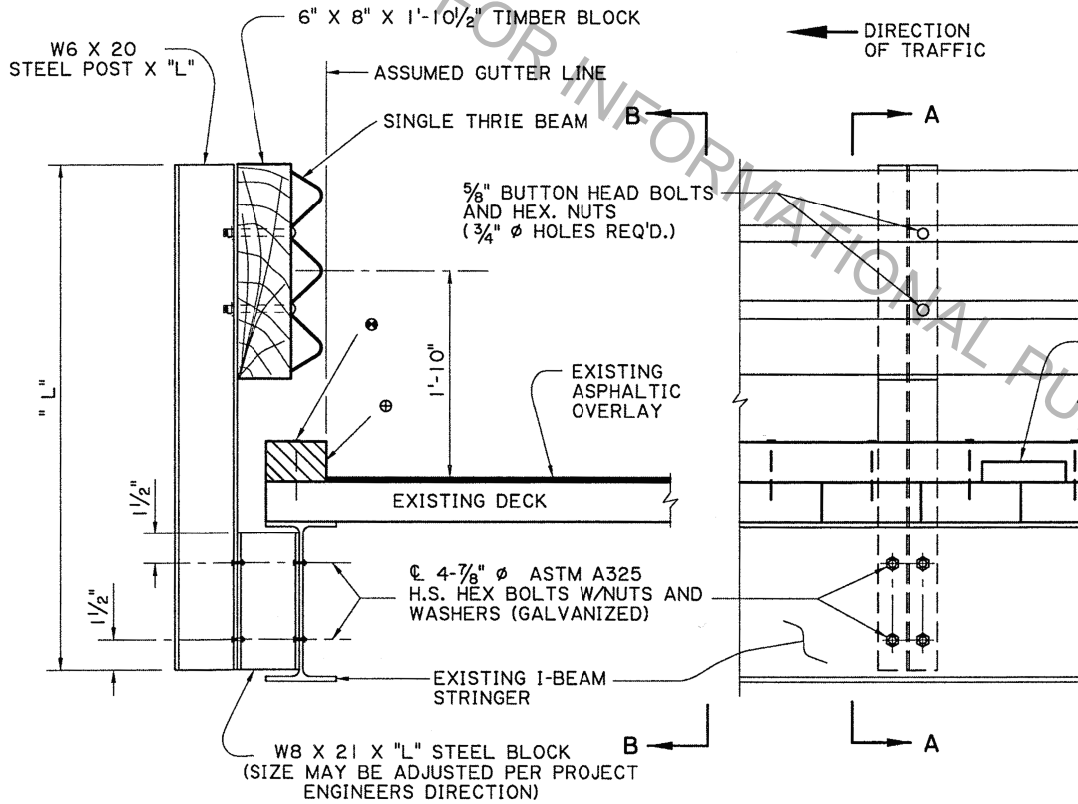


- ⊙ 2" X 1'-0" NOTCH FOR DRAINAGE
- ⊙ 6⁷/₈" SPIKE AT EACH FLOOR PLANK
- ⊕ 4" X 6" X LGTH. OF BRIDGE FELLOE GUARD (NEW) (NOTCH FOR DRAINAGE)



SECTION A-A

SECTION B-B

NOTES

ALL WORK AND MATERIAL (INCLUDING THE NEW FELLOE GUARD) REQUIRED TO INSTALL THE NEW BRIDGE RAIL SHALL BE PAID FOR UNDER ITEM 704-01-01020 GUARDRAIL (SINGLE THRIE BEAM) (6'-3" POST SPA.)

EXISTING ASPHALT SHALL BE CLEARED FROM AREA WHERE FELLOE GUARD IS TO BE PLACED SO THAT THE FELLOE GUARD WILL BE ON THE TIMBER DECK.

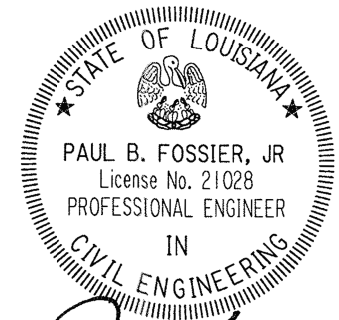
POST SHALL BE LOCATED AT EACH BENT AND AT INTERMEDIATE POINTS NOT TO EXCEED 6'-3" (EQUALLY SPACED)

IF DIRECTED BY THE PROJECT ENGINEER, A DIAPHRAGM SHALL BE PLACED AT EACH INTERMEDIATE POST BETWEEN THE FIRST AND SECOND STRINGER. (TO BE INCLUDED IN 704-01-01020.

"L" (POST HEIGHT & STEEL BLOCK) SHALL BE DETERMINED IN THE FIELD.

FOR ADDITIONAL INFORMATION ON GUARDRAIL, SEE STD. PLAN GR-200.

ALL STRUCTURAL STEEL SHALL BE ASTM A36 AND GALVANIZED. ALL 5/8" ⌀ BOLTS SHALL BE ASTM A307.



Paul B Fossier
5-31-17

	SIDE MOUNTED BRIDGE RAIL		DESIGNED	P. FOSSIER	PARISH	SHEET NUMBER
			CHECKED	C. GAUDRY		
STANDARD DETAIL	BD.2.6.4.1.12		4-8-16	GUARDRAIL HEIGHT, ANCHOR BOLT NOTE AND BASE PLATE	P. F.	CONTROL SECTION
			NO.	DATE	REVISION OR CHANGE ORDER DESCRIPTION	BY
						STATE PROJECT